



Community Foundation for Kingston & Area

**ANNUAL
REPORT**

**20
10**

BOARD OF DIRECTORS



Florence Campbell - President



Greg Fisher - VP/Treasurer

President
Florence Campbell

Past President
Bob Pritchard

VP/Treasurer
Greg Fisher

Secretary
John Morse

Directors
Larry Aitken
Marilyn Banting
Tina Dacin
Lynn Harding
Peter Hartel
Ameena Jaffer
Diane Kelly
Scott Miller
Melanie Steers
Chris West
Rod White
John Wilson



Past presidents, *from left to right*: Michael Davies, Regina Rosen, Judith MacKenzie, Dan Norman, and Bob Pritchard



Investment Manager
Marc LeBlanc

Legal Counsel
Mary-Alice Thompson

Honorary Life Members
Michael Davies
Eveline Flint
Virginia Gordon
Regina Rosen



STAFF
Executive Director
Vikram Varma

Administration Manager
Janna Stanistreet

Grants Coordinator
Vera Kettner

Bookkeeper
Gail Young

MESSAGE FROM THE PRESIDENT AND EXECUTIVE DIRECTOR

2010 was a busy and successful year for our Foundation. The financial markets continued their upward trend and thanks to our Investment Committee, the funds under management for donors to our community returned 9.30% in 2010¹, adding to the 13.83% realized in 2009.

We recognize the generosity of all the donors who have partnered with CFKA since its inception by providing funds in perpetuity to build a caring, healthy and culturally rich community. As our 2010 Vital Signs Report outlined, almost 27% of Kingston area citizens claim charitable donations on their tax returns.

We applaud the many worthy charities who work tirelessly and effectively to fulfill their various missions improving our community's quality of life. In 2010, we were able to provide \$291,590 to 121 organizations, assisting them on their paths to contributing to a better Kingston.

To help both donors and grantees, an important spending policy change was approved this year. It will minimize the volatility in funds provided to charities that happened during the economic downturn. The new policy determines distribution based on a long-term average of the Foundation's return (currently 5.1% since 1998) and will distribute a minimum of 2.5% and maximum of 3.5% of the fund capital each year. For those of you who would like more information, we welcome the opportunity to sit and discuss this new policy in more detail.

Producing Vital Signs Reports for the last two years has helped our Board deepen its understanding of the issues and challenges our community faces. Last year we invited officials of three local organizations who are experts in the areas covered in the report to collaborate and provide input. That successful approach will be continued in 2011. The Vital Signs Reports have been of significant help to our volunteer committees as they work through CFKA on behalf of the community. The Grants Community especially finds the information useful in decision-making sessions to award grants to charitable organizations. Our efforts will be focused on continuing to grow the funds



for community use and increase the flexibility of our funds; improve the impact of grants to charities; build our organization's capacity and broaden the community's knowledge of the Foundation's work.

To keep our donors and friends up-to-date with our activities, in 2010 we hosted four breakfasts with distinguished speakers and held four legal and accounting seminars thanks to professionals in the community who generously volunteered their time. Volunteers and staff helped to launch a Facebook site, a YouTube site, an e-newsletter and to publish two issues of our acclaimed Ripples.

Finally, we wish to express our profound thanks to our Board of Directors and all the volunteers who are passionately dedicated to serving our community and volunteer their time to help carry out the Foundation's mission. Through their efforts, and working with the many local community organizations, we continue to make strides towards making Kingston and area a caring, healthy and culturally rich community.

Gloria M. Langsteel

Vikram Karna

¹ Figures reported in this report are net of fees charged by Fund Manager unless otherwise noted

THE FOUNDATION

OUR MISSION

We and our donors strengthen our community by making strategic and effective grants, growing and managing a lasting endowment, and serving our community as a resource and partner.

COMMITMENT TO COMMUNITY

Our view of community issues and priorities is independent and crosses many sectors. We are a community convenor and leader transcending special interests and we reflect the interests of the community at large.

OUR VISION

We envision a vibrant, creative community where everyone has the opportunity to take part in building a caring, healthy and culturally rich community.

BROAD PERSPECTIVE

We make effective grants and develop networks in a wide range of sectors. We are well placed to make simple, but often powerful connections between people and organizations in the community.



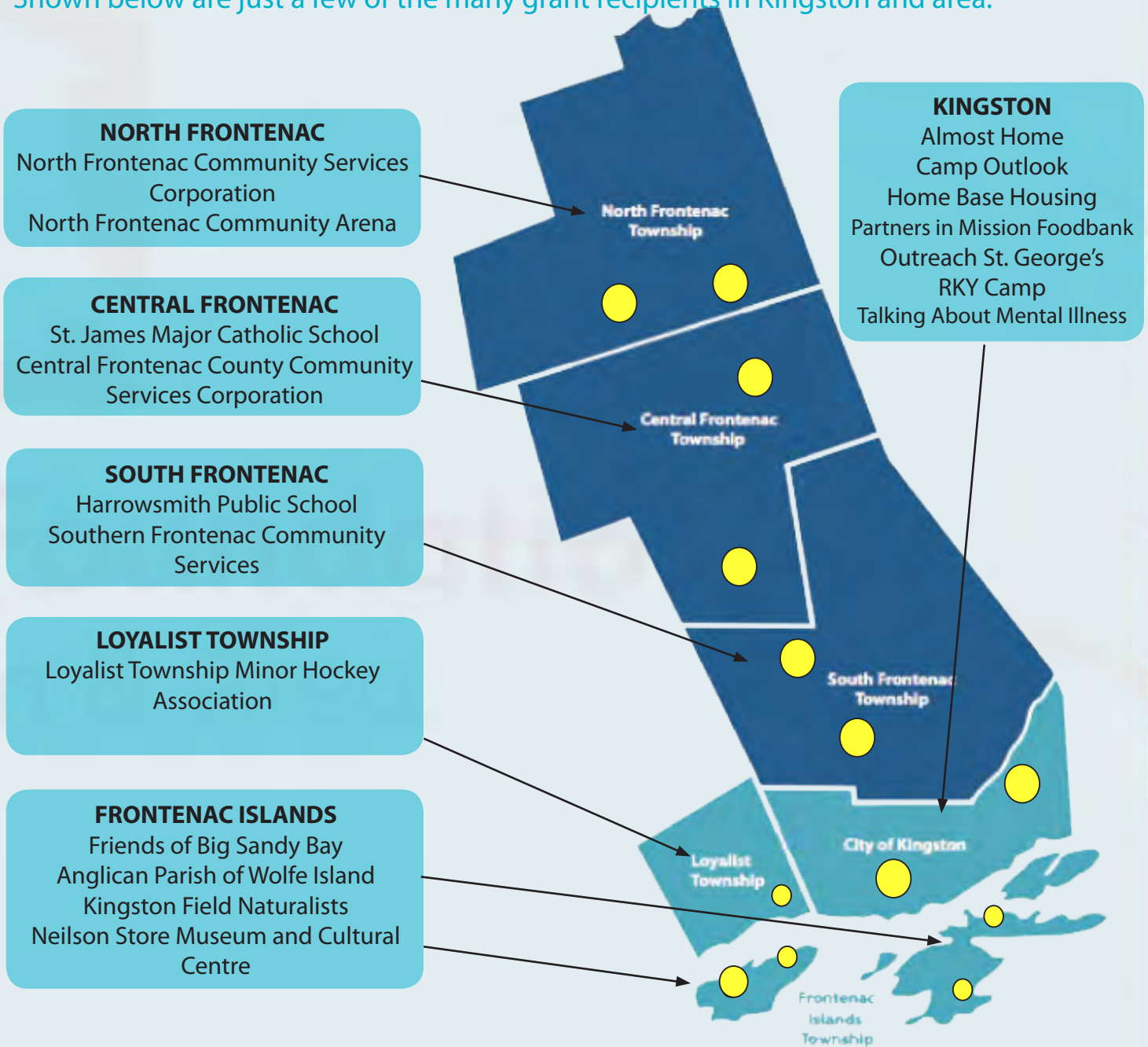
TEN REASONS WHY PEOPLE CHOOSE US

1. We are a local organization with deep roots in the community, and part of a nationwide movement whose support we build and share.
2. We bring donors to the table as community builders, working closely with them to align their philanthropic vision with the community's needs.
3. We identify long-term needs and opportunities and invest in solutions that let our communities guide their own future.
4. We take a broad and inclusive view of what a community is, and provide grants to the widest possible range of organizations and initiatives.
5. We provide highly personal and flexible service, accepting a wide variety of assets and offering donors maximum tax advantage.
6. We build permanent funds and those that can respond to immediate needs, helping our communities ensure vital futures.
7. We multiply the impact of gift dollars by pooling them with other gifts.
8. We believe that diversity is strength, so we bring the entire community together to stimulate new ideas, build participation and strengthen community philanthropy.
9. We are transparent and reputable stewards of community resources, committed to being accountable, accessible and responsive.
10. We build community vitality – the unique and essential spirit that flourishes when people believe their community holds possibilities for everyone.

Did you know? Winnipeg, Manitoba is home to the oldest Community Foundation in Canada. It was founded in 1921!

CONTRIBUTING TO THE ENTIRE COMMUNITY

Shown below are just a few of the many grant recipients in Kingston and area.



The Community Foundation for Kingston & Area also distributed grants in Prince Edward County through the Stark Family Fund.

VITAL SIGNS

ECONOMY

WORK

GETTING STARTED

INCOME & POVERTY

HOUSING

SAFETY

HEALTH & WELLNESS

ENVIRONMENT

LEARNING

BELONGING

ARTS & CULTURE

VITAL IMPACT

We are online! Look for us on YouTube, Twitter, and Facebook!



economy

STUDENTS IN FREE ENTERPRISE, ST LAWRENCE COLLEGE, a group of motivated students, will aid in the building of a 12' by 20' walk-in freezer for the Partners in Mission Foodbank. This initiative will expand the foodbank's ability to reach our community, while coping with an industry shift towards frozen food donations.



learning

THE LIMESTONE LEARNING FOUNDATION (LLF) has enabled students to take learning from the classroom and apply it in a hands-on way. Through the Frontenac Family Wind Farm project, students at the LLF were given the opportunity to attend a workshop that taught them about wind power and gave them time to build their own miniature wind turbine.



health & wellness

The **KINGSTON COMMUNITY HEALTH CENTRES - BETTER BEGINNINGS FOR KINGSTON CHILDREN, PRENATAL NUTRITION PROGRAM** provides milk coupons, prenatal vitamins, the Good Food box, and encouragement for soon-to-be mothers to participate in educational and support programs. This program increases access to nutritious foods for a vulnerable, high-needs population. The **COMMUNITY FOUNDATION FOR KINGSTON & AREA** is proud to be a supporter of this program.

belonging

COMMUNITY RESPONSE TO NEIGHBOURHOOD CONCERNS, WALLY ELMER SKATE PARK is the first of its kind in Kingston. Completed, it will be a 12-13,000 square foot park designed for all skateboarding, biking, and rollerblading sports, all while being wheelchair accessible. The facility has been designed to encompass streetscape with a skate bowl to provide healthy, free activities for youth ages 9-22 years old.



income and poverty

THE POVERTY CHALLENGE received a grant from the **COMMUNITY FOUNDATION FOR KINGSTON & AREA** that allowed them "to reach a wider audience of students and provided us with the tools to engage with them through social media platforms in a way that we weren't able to before." Through their Youth Challenge conference, **THE POVERTY CHALLENGE** "builds empathy and understanding, and ultimately, we hope, change."



arts & culture

"**THE LOWER BURIAL GROUND** is an important piece of Kingston and early Canadian history... It is one of the oldest English cemeteries west of Montreal. These grounds hold the remains of the founding families of Kingston, the prominent and the ordinary people. It is our duty to those who came before us to protect this rich heritage and to pass it on to those who follow... In Kingston we are very fortunate that we have the local support to protect and preserve these reminders of our past. **COMMUNITY FOUNDATION FOR KINGSTON & AREA** has helped to restore this historic landmark and we are very grateful for their contribution."

-Marianne Thompson

YEAR AT A GLANCE



NEW PRESIDENT AND BOARD MEMBERS

Welcome to the new president and board members

CFKA is proud to welcome Florence Campbell as our new president. A retired senior executive who served as Vice President Advancement at Queens and as Vice President Conference Board of Canada, Florence brings a wealth of experience to CFKA. CFKA thanks past president Bob Pritchard for his leadership over the past two years. We would like to welcome our new board members: Larry Aitken, Tina Dacin, Peter Hartel, and Rod White.



NEW GRANT RECORD

Community Response to Neighbourhood Concerns

The biggest grant ever of \$30,000 was awarded to the Community Response to Neighbourhood Concerns - Wally Elmer Skate Park. The skate park will be the first of its kind in Kingston and will provide free, healthy activities for youth between the ages of 9-22 years.



INCREASED COMMUNICATIONS

Ripples and Waves

Our semi-annual publication Ripples, which is printed and distributed for us by the Kingston Whig Standard, always receives rave reviews from our stakeholders. In 2010, we launched a complementary, electronic newsletter, WAVES, released at the beginning of each month, to bring you updates on our activities.



REACHING OUT THROUGH VIDEO AND SOCIAL MEDIA

www.youtube.com/user.cfkaed

Always looking forward to the next thing, we have implemented a process to allow donors, grant recipients, and the general public a bigger window into what we do here at the CFKA. Through the creation and development of our Youtube channel we will begin to expand our visual marketing and tell our story with more vivid support.

SPEAKER SERIES

Almost 500 attendees! Watch our publications for next year's series and book your spot now!

Through our relevant and educational speaker series this year, we reached almost 500 people, inspiring them to look inward and discover their personal philanthropist. Our Seminar Series brought important topics to the forefront with educational lectures from industry professionals.

SEMINAR SERIES

Update on Charities Law & Tax Developments

June 22, 2010

Greg Fisher - KPMG & Mary-Alice Thompson - Cunningham, Swan Lawyers

Structuring Wills & Estate Planning

September 14, 2010

Carolyn Knight - Viner, Kennedy, Frederick, Allan & Tobias LLP

Leveraging Your Charitable Gift: Tax Efficient Charitable Donation Strategies

September 22, 2010

Len Anderson, Jonathan Warren - KPMG
Lee Wetherall, Charlene Fawcett - RBC
Dominion Securities



Look for highlights of our Speaker Series on YouTube!

BREAKFAST SERIES



Lawrence Scanlan

Author, Philanthropist

Mr. Scanlan spoke about his book and experiences of being a philanthropist. He delivered a captivating lecture noted, "All Charity is Humiliating".



The Right Honourable Paul Martin

Past Prime Minister of Canada

The Rt. Hon. Paul Martin enlisted the audience in his passion to see Canadian communities prosper through his talk, "Social Enterprise: Investing in our Community".



Dr. Charles H. Tator

Researcher, Toronto Western Research Institute

Dr. Tator, known for his research in Spinal Cord and Brain Injury at Toronto Western Research Institute and founder of ThinkFirst Canada, spoke about making communities safer by stopping concussions in sport.



Alia Hogben

Executive Director, Canadian Council of Muslim Women

Ms. Hogben conversed with us challenges and celebrations of Muslim women living in Canadian with her excellent talk entitled, "Being a Canadian Muslim Woman".

GRANT DISTRIBUTION

In 2010, the Community Foundation for Kingston & Area provided \$291,590 to 121 organizations, contributing to a better Kingston & Area.

ORGANIZATION	GRANT	ORGANIZATION	GRANT
GRANTS		City of Kingston	4,530
<i>Community Grants Program (in partnership with Assante Financial Management)</i>		Doctors Without Borders	200
Almost Home	1,500	Domino Theatre Inc.	1,500
ALS Society of Ontario	4,000	Easter Seals Ontario	325
Boys and Girls Club of Kingston and Area	4,000	Faith United Church	2,100
Canadian National Institute for the Blind - Kingston Satellite Office	6,275	Farm Radio International	150
Cataraqui Archaeological Research Foundation	2,000	Food Sharing Project	5,200
Community Response to Neighbourhood Concerns	30,000	Foundation Western	2,000
Frontenac County Schools Museum Association	1,000	Grand Theatre Foundation	130
Good Food Box - Kingston Area	1,578	Heart and Stroke Foundation of Ontario	400
Grant MacDonald Community Portraits Committee	1,650	Kingston Arts Council	3,000
HIV/AIDS Regional Services	5,705	Kingston Unitarian Fellowship	800
Home Base Housing	2,500	Limestone Learning Foundation	750
Katarokwi Native Friendship Centre	4,000	Marine Museum of the Great Lakes at Kingston	7,759
Kingston Choral Society	1,000	Martha's Table Community Program Inc.	250
Kingston Community Health Centres - Better Beginnings for Kingston	3,600	McGill University	1,500
Kingston Community Roundtable on Poverty Reduction	1,500	Montreal Diet Dispensary	800
Kingston Family YMCA	3,000	Ontario 4-H Council	100
Kingston Field Naturalists	2,500	OXFAM Canada	300
Kingston Grenadiers Drum & Bugle Corps	3,000	Partners in Mission Food Bank	250
Kingston Literacy	1,600	Princeton University - Graduate School Alumni Giving	500
Limestone Learning Foundation	13,875	Queen's University	2,000
Loving Spoonful	3,000	Queen's University - Ban Righ Centre	500
Lower Burial Ground Restoration Society	4,000	Rotary Club of Nepean-Kanata	200
Martha's Table Community Program Inc.	2,500	Rotary Foundation of Canada	1,500
Modern Fuel Artist-Run Centre	1,500	Royal Military Colleges Club of Canada Foundation Inc.	1,500
Museum of Health Care at Kingston	1,600	Salvation Army - Kingston Citadel Corps	700
New Leaf Link	1,500	Save the Children Canada	200
Outreach St. George's Kingston	1,000	Seniors Association Kingston Region	200
Queen's University - Agnes Etherington Art Centre	1,280	Shelter Box Canada	1,000
Queen's University - CFRC Radio	1,000	St. Columba House	250
SIFE St. Lawrence College	2,500	St. James Anglican Church	5,400
Southern Frontenac Community Services Corporation	1,500	St. Vincent de Paul Society of Kingston	300
Talking About Mental Illness	5,000	Sydenham Street United Church	4,200
The Kingston Melos Society	2,000	The African Medical and Research Foundation	300
Youth Diversion Program	2,369	The Hunger Project	5,000
TOTAL	\$125,032	The War Amputations of Canada	50
DISBURSEMENTS		Thousand Islands Foundation for the Performing Arts	200
<i>Flow Through Funds</i>		TVOntario	200
Alexandria United Church -- Cemetery Fund	300	United Way Serving Kingston, Frontenac, Lennox & Addington	2,300
Almost Home	250	University Hospitals Kingston Foundation	1,450
Alzheimer Society of Canada	200	VON Canada - Ontario Branch	100
Batshaw Youth and Family Services Foundation	800	World Vision	250
Boys and Girls Club of Kingston and Area	250	TOTAL	\$64,995
Camp IAWAH	100	DISBURSEMENTS	
Canadian Cancer Society	1,000	<i>Donor Advised and Designated</i>	
Canadian Cancer Society - Ontario Division	250	Amnesty International Canada	163
Canadian Parks and Wilderness Society	1,000	Bayridge Secondary School	592
Canadian Red Cross Society - Kingston & District Branch	150	Boys and Girls Club of Kingston and Area	4,052
Cancer Research Society	250	Camp Outlook	731
Childhood Asthma Foundation	100	Canadian Mental Health Association - Kingston Branch	2,000

ORGANIZATION	GRANT	ORGANIZATION	GRANT
Canadian National Institute for the Blind - Ontario Division	248	St. Gregory Catholic School	46
Cantabile Choirs of Kingston	1,400	St. Vincent de Paul Society of Kingston	294
Care Canada	83	Sunnyside Children's Foundation	24,000
Cataraqui Conservation Foundation	34	University Hospitals Kingston Foundation	19,674
Child Haven International	83	Wolfe Island Fire Hall	252
Christian Blind Mission International	163	Wolfe Island Medical Centre	252
Church Athletic League	713	TOTAL	\$71,641
City of Kingston - PRO Kids	31		
Community Response to Neighbourhood Concerns	294	STARK GRANTS	
Covenant House Vancouver	163	<i>The Stark Family Fund</i>	
Martha's Table Community Program Inc.	294	Rotary Club of Picton	5,750
Neeje Association for Women and Family	92	Wellington Arena Replacement Project	5,000
Physicians for Global Survival	163	Prince Edward County Memorial Hospital Foundation	17,000
Project Ploughshares	163	TOTAL	\$27,750
Providence Care - Providence Manor	1,009		
Providence Continuing Care Centre Foundation	569	YOUTH ADVISORY COMMITTEE GRANTS	
Queen's University - Agnes Etherington Art Centre	115	<i>Grants Designated by Youth Advisory Committee</i>	
Queen's University - Office of University Advancement	450	Bayridge Public School	640
R.C. Episcopal Corp. of the Diocese of Kingston	294	Enterprise Public School	400
RKY Camp	3,764	Joyceville Public School	381
Rotary Club of Kingston	1,500	Lord Strathcona Public School	300
Sacred Heart of Mary Church	3,252	Marysville Public School	200
Salvation Army - Kingston Citadel Corps	248	St. Thomas More Catholic School	250
Seniors Association Kingston Region	200	TOTAL	\$2,171

YOUTH, 45%
Example of 2010 YOUTH Grant,
\$30,000

The Wally Elmer Skate Park, the first of its kind in Kingston, will be a 12-13,000 square foot park designed for skate boarders, BMX and mountain bike cyclers, roller bladers and in-line skaters, and wheelchair accessibility. The skate park will be developed on the Wally Elmer Neighbourhood Centre property. The facility will be designed to encompass streetscape with a skate bowl to provide healthy activities for ages 9-22, free to all.

ARTS & CULTURE, 11%
Example of 2010 ARTS & CULTURE Grant,
\$4,000

Katarokwi Cultural Project will enhance the cultural and traditional knowledge of participants of the Anishnabe community in the greater Kingston area. This project will involve youth and their families in cultural activities such as drum making, regalia making, native dancing and drumming, and organizing social events. The project would also involve native teachings and traditions such as full moon ceremonies, change of season ceremonies, traditional feasts, pipe ceremonies, sweat lodges, etc.

EDUCATION & LITERACY, 6%
Example of 2010 EDUCATION & LITERACY Grant,
\$1,500

A comfortable reading nook will be created at Bayridge PS where a team of parent volunteers (the "Nanny's"), will read leveled reading resources to and with the primary students (140 students K-Gr. 3). This project is an extension to the very successful Bayridge take-home, parent-assisted reading program "Pawing to Read." This reading experience will help with reading self-confidence in the students.

RECREATION, 1%
Example of 2010 RECREATION Grant,
\$1,500

Southern Frontenac Community Services, with support from the South East Local Health Integration Network and the Community Foundation for Kingston & Area, is creating an enhanced day-away respite program for seniors. This new program will complement the current program and provide more one-on-one, enhanced care for seniors. The current day away program for the more ambulatory seniors is relocating to the recently acquired and refurbished Harrowsmith Centre and the equipment purchased with this grant will ensure that seniors will receive appropriate and exciting new activities.

HERITAGE CONSERVATION, 6%
Example of 2010 HERITAGE CONSERVATION Grant,
\$4,000

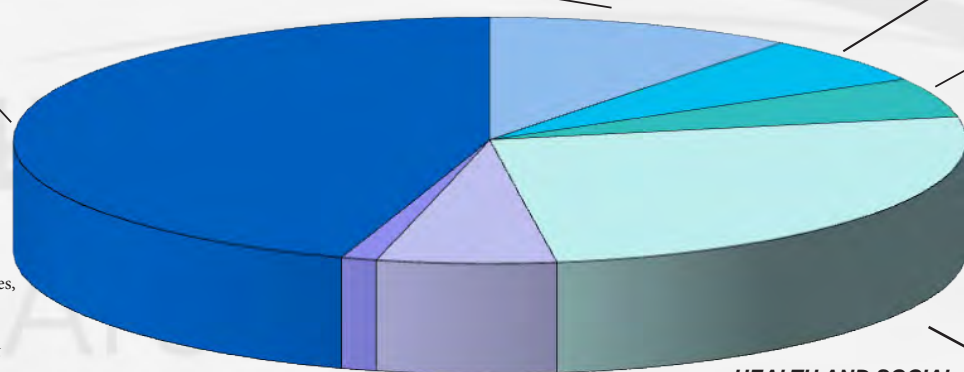
The Lower Burial Ground Restoration Society is dedicated to restoring and preserving the oldest burial ground west of Montreal (1783), its monuments, markers and the stone perimeter wall. The wall, built by F.X. Rocheleau in 1799, is the only part remaining of a three-sided enclosure and is probably the second oldest stone structure remaining in Kingston. If the wall is not rescued soon, it will be beyond saving.

HEALTH AND SOCIAL SERVICES, 26%
Example of 2010 HEALTH AND SOCIAL SERVICES Grant,
\$3,600

Kingston Community Health Centres - Better Beginnings for Kingston Children, Prenatal Nutrition Program delivered at Better Beginnings for Kingston Children provides milk coupons, prenatal vitamins, and the Good Food Box and encourages participation in our educational and support programs.

ENVIRONMENT, 5%
Example of 2010 ENVIRONMENT Grant,
\$2,500

Sustainable Living Project The "Harvesting House", Canada's first student-built energy net zero home, will serve as the base for an interactive education centre for elementary and secondary students of two school boards, post-secondary students, and the community as a whole.



2010 Grant Distribution by Sector

DONORS

We sincerely appreciate all those who have invested in their community with a donation to the Community Foundation. The following list acknowledges accumulated contributions of \$500 or more since our launch in 1995.

DONOR NAME	DONOR NAME	DONOR NAME
102511 Canada Inc.	Estate of Ruth Barton	James ■ & Patricia Cairns ■
1311382 Ontario Limited	Joyce Barwick	Barbara Caldwell
The Merchant Macliam	John & Lyndsay Bates	Camera Kingston
2202942 Ontario Limited	Leilan Baxter	Camp Outlook Endowment Fund
753252 Ontario Ltd.	Jim ■ & Jane Bayly	Florence M. Campbell
808117 Alberta Ltd.	Sheila & Don Bayne	Lorne Campbell
Ann Abraham	Barbara & Richard Burns	Gary Campeau
Jay & Toby Abramsky	Charles Beach	Charles & Laura Camping
The Shirley & Mort Abramsky Fund	Bearance's Grocery	Canada Life Assurance Company
Acadian Computer Service	Margaret & Ross Beardall	Canadian Bridge Federation
Ace Auto Leasing Ltd.	Beatty Seeds Ltd	Canadian Endowment Management Limited
Art Acharya	Bell Canada	Canadian Land Force Command & Staff College
Mike & Jyoti Acharya	Lesley Bell & Rod Morrison	Canadian Mental Health Association
John Adamson	Benefits by Design	Canadian Renewable Energy Corporation
AGF Management Limited	Elaine & Bruce Berman	Canadian Tire Associate Store
Ireneus Zuk	John & Nonie Bermingham	Cancoil Thermal Corporation
Arlene Aish	Wilma Bernabei ■	Christine Cannon
Alcan Aluminium Limited	Mr. & Mrs. T.H. Noerenberg	Cantabile Choirs of Kingston
Algonquin Travel	George ■ & Leah ■ Binnington	Peter & Mary Carlson
David & Gloria Allan	M. Jean Black	John ■ & Katie Carmichael
John & Catie Allan	Emma Blanchard Clench ■	Carney & Cahill Golf Tournaments
Douglas R. & K. Ellen Allen	BMO Financial Group	Pamela Carr
Julia Allen	BMO Bank of Montreal - Financial Centre	Robert & Margaret Carr
Alma Mater Society	Lorna C. Boag	Donald D. & Cathie Carter
Amherstview Golf Course Limited	Patricia Boe	Cassels Brock & Blackwell LLP
Amherstview Sports Association	Bombardier Transportation	Cataraqui Conservation Foundation
Vincent & Rose Amedeo Memorial Fund ■	David & Heather Bonham	Chamber Music Soirees
Anchor Concrete Products Ltd.	Robert & Kathleen Booth	William Cherry
Susan Anderson	Bosal Canada Inc.	Chez Piggy / Pan Chancho
The Andy Fund of Kingston	Elizabeth Bowes	Lorna Childs ■
John & Portia Angus	James ■ & Norma Bown	Lori & Jan Chithalen
Istvan & Beate Anhalt	Jean Boyle	June & Eleanor Chithalen
Anna & Edward C. Churchill Foundation	Boys and Girls Club of Kingston and Area	Eleanor Muriel Christopherson
Arriscraft International Inc.	Margaret & George Bracken	CHUM Radio Group Brockville (103.7 BOB FM, 104.9 JR FM)
Diane Arthur	Braebury Homes Corporation	CI Investments Inc.
Assante Financial Management-Fenlon Division	Gerald & Joan Brake	CIBC
Assurant Solutions	Dr. Robert Briggs	CIBC Charitable Foundation
Autohouse Kingston	Dr. Maureen Briscoe & Dr. James Day	CIBC Wood Gundy
Dan & Donna Aykroyd	Britton Smith Foundation	CIBC World Markets
Peter & Lorraine Aykroyd	Susan Brodt & Alan Cohen	City of Kingston
B'nai Brith Lodge 1191 Kingston	Brown's Fine Food Services	Clarica Life Insurance Company
Grace E. Bacon	Beverly & Paul ■ Brown	Cameron & Eleanor Clark
Dr. and Mrs. David Baird	James & Joan Brown	Stephen & Lynn Clyde
Jeanne Bak	Julian & Kaaren Brown	The Co-operators
Nicholas & Martha Bala	Phillip Brown	Gerry & Trish Coady
T. Anthony Ball	Janice M. Bruni	Collins Barrow Chartered Accountants
The Ballytobin Foundation	Margaret Buckholtz	Community Foundations of Canada
John Bannister	James Bulloch	Community Foundation for Kingston & Area
Keith & Marilyn Banting	Stanley Burke	Compass Group Canada
John N. Barber	Bernard Burkom	Compucentre - Cataraqui Town Centre
R. James Barber	Bob & Doris Burnside	Justin Connidis and Julia McArthur
Mike & Brenda Bardon	Jackie Burroughs	Consulting Africa Ltd.
Gayle Barr	Mary Pat Byrne	Cooke's Old World Shop Limited
Margaret Barraclough	Diana Cahill	Corus Entertainment Kingston (FM 96 / Lite 104.3FM/CKWS TV)
Dr. John T. Bart	Heather Caird	Cosme Auto Services Ltd.

DONOR NAME	DONOR NAME	DONOR NAME
W. Ronald Cotton	Franklin Templeton Investments	Homestead Land Holdings Limited
Council of Michigan Foundations	Ian M. Fraser & Janine M. Schweitzer	The Honourable William J. Henderson Foundation
Countrywide Kitchens Inc.	William and Rae Ann Freeman	George N. Hood
County of Frontenac	Friends of the Phoebe	Bruce H. Hopkins
Coutts (Bermuda) Limited	Helen Fullerton	Hospice Kingston
Dr. John Cowan & Marie-Anne Erki	FundEX Investments	HSBC Bank Canada
Bob & Laura-Lynn Crichton	Jocelyn R Fyfe	The Hub Group
Cruickshank Construction Limited	Stewart & Jocelyn Fyfe	Hydro One
Culligan, Eastern Ontario Water Technology Ltd	G L L Group Inc.	India Canada Association
Robin Cumine	G. Tackaberry & Sons Construction Company Ltd	Indigo Books & Music Inc.
Cumming Cockburn Limited	Col J.R. Gagnon	Inter-Agency Council for Children
Cunningham & Poupore Limited	Leslie J. Galbraith & Robert E. Baker	Interfund Gifts
Cunningham, Swan, Carty, Little & Bonham	Peter & Ruth Galbraith	Investors Group
CUPE Local 109	Corporation of the Town of Gananoque	Ivimey & Hogeboom
George & Helen Cuthbertson	Gap Foundation	J. Armand Bombardier Foundation
Steve & Nancy Cutway	Constance and Robert Gardiner	Tim Hortons of Kingston
John d'Esterre	Ruby Garrow ■	J.J. Barnicke Eastern Ontario Limited
Dacon Corporation Limited	Stella Gartland ■	J.L. Richards & Associates Limited
Tony & Maggie Daicar	Peggy & Andy Geracimo	The J.W. McConnell Family Foundation
Daltco Electric & Supply (1979) Ltd.	Gervan and Associates	W F Jackson & Karen Knox
Valerie Dalton	Stanley Gibson & Marie-Rose Ernst	Ameena & Taj Jaffer
Anju & Chandar Datta	Jack Gilfillan	James Braden Ford Ltd.
Merv Daub & Elaine Forshaw	Gill Ratcliffe Foundation	James Reid Limited
The Davies Charitable Foundation	Good & Elliott, Barristers & Solicitors	Jay McKee Charity Golf Tournament
Arthur Davies ■	Barbara Good	Harry & Anne Jemmett
Gregory & Caroline Davies	Lin Good	Jensen Building Ltd.
Jane Davies ■	Gordon Barr Limited	Jerome Taylor Auto Mall
Mrs. Rupert (Margaret) Davies Fund ■	Gordon F. Tompkins Funeral Homes	Jim Thompson Chrysler Dodge Jeep
Michael & Elaine Davies	Gordon's Estate Services Ltd., Brokerage	The Joe Chithalen Memorial Musical Instrument Lending Library
Miranda Davies	Marlene & Bruce Gordon	John & Barbara Johannsen
Robertson & Brenda Davies	Robert D. Gordon	Lewis and Sheila Johnson
Kathryn Davis	John & Virginia Gordon	Moe & Janice Johnson
David Day	Government of Canada-Canadian Heritage	Gayle Johnstone
Bernard & Debra Degagne	Government of Ontario - Ministry of Tourism & Recreation	Lyndon Jones
Diamond Hotels Inc.	Government of Ontario	Mrs Irene Jonker
The Dickenson Group	Mark Graham	Jotrin Investments Ltd.
June & Henry Dinsdale	Grand Theatre Volunteers	Ian Juby & Hollie Stewart
Charlotte & Peter Dorn	Gloria Grant Fitzpatrick	June's Classic & Casual Couture Ltd.
Downtown Kingston! B.I.A.	Gayle Grant McBride	K Rock 105.7
Rob Drysdale	Janis & Alan Grant	Nathan & Rita ■ Kaufman
The Marion and John Dunn Fund ■	Gravel Knoll Farms, Reg'd.	Patricia Keane
Dupuis & Hefford Hockey School	Nancy & Bill Gray	T. Jeffrey Kearns
DV Logistics Inc.	MGen Don & Dene Gray	Keeler Sales & Service (Kingston) Limited
ECHO Extremely Conscientious Hair Organization	Michael & MaryEllen Greenwood	Ann E. Keller
Glenys Elliott	Grenville Christian College	Diane Grace Kelly
Canadian Tire - Cataraqui (Elwin Derbyshire)	Jane Griffiths	William ■ & Gladys Kelly
Empire Life	Donald & Joanne Gulevich	Jim Kelly
Empower You	The Doornekamp Family, Odessa	Peter Kelly
Caroline Farrell	Hadassah-Auxiliary Bazaar	Lynne & Bill Kenny
Albert & Christa Fell	Terry Haird & Irene Stevens	John & Beryl Kerr
Walter Fenlon & Linda Ann Daly	Katharine Ham	Keystone Property Management Inc.
W. Craig Ferguson	Elizabeth & Carl Hamacher	The Classic Fund
Fidelity Investments Canada Limited	Gordon Hamilton	KIMCO Steel Sales Ltd.
Robin M. Field	Beverley & Bill Harris	Kincore Holdings Limited
Gerald & Helen Finley	Peter & Janet Hartel	King's Town Development Corporation
Greg Fisher	Dr. J.W. ■ & Lois Hazlett	Kingston 1000 Islands Cruises
Eveline & Ted ■ Flint	Janet Hazlewood	Kingston Brewing Company
John D. Flintoft	Elisabeth & John ■ Heney	Kingston Community Credit Union
Nora C. Forman	A.M. Herzberg	Kingston Community Health Centres
Elaine Forshaw	Hickey & Hickey Barrister & Solicitors	Kingston District Junior Men's Hockey League
Jim Foster & Gillan Dagg-Foster	Joan & Michael G. Hickey	Kingston Financial Centre
Leonore Foster	Molly Higginson	Kingston Frontenac Public
Robert G. Foster & Bonita E. Bell	Mary Ann Higgs and John Johnson	Kingston Humane Society Endowment Fund

DONOR NAME

DONOR NAME

DONOR NAME

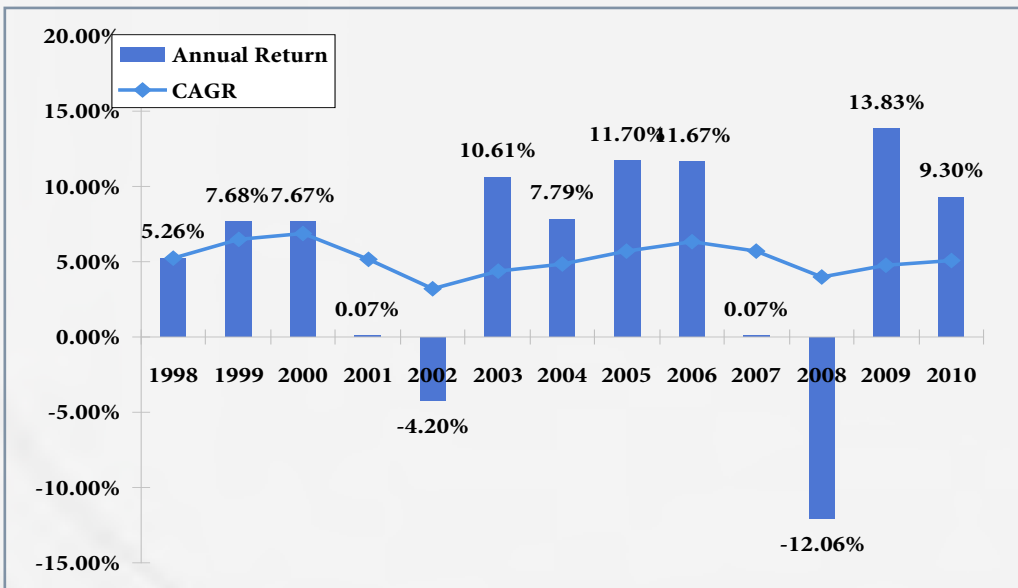
Kingston Publications	David & Catherine McCart	OHIP Hockey Team
Kingston Symphony Association - Volunteer Committee	Lawrence & Pamela McCurdy	Kenneth & Therese Olivier
Kingston Symphony Association	Gordon McDiarmid & Barbara Perry	Bert Olthof & Karen Raven
Kingston Terminal Properties Ltd	Shelagh McDonald	Ontario Mapping Company
The Kingston Whig-Standard	Chris & Marie McElvaine	Ontario Marina Operators Association
Peter & Sheila Kingston	Tim McElvaine	Open Sky Capital
Ron Kingston	Alice McKeown ■	Opportunities Kingston
Samuel Kingston ■	Peter McKercher	Brian & Ann Osborne
Tim Kingston & Tamara Kayfetz	Kenneth H. McKibbin	Osprey Media Group Inc.
Peter & Theresa Kirkham	Sheila & John McKirdy	Murray ■ & Nancy Overington
Joan ■ & Ray ■ Kizell	Robert McKnight & Margaret Betts	Dennis & Pamela Owen
Richard & Cheryl Kizell	Robert McKnight	David & Carol Page
Merle Koven	David & Jean McLay	Andrea Panet
KPMG LLP	The McNevin Family Fund	Clara and Ron Paquin
L.T.M.H.A. General Account	Fern McQueen	Jim & Julie Parker
Labatt Brewing Company Limited	David J. & Anndale McTavish	Kevin & Barbara Parker
Fred & Mary Laffamme	Dr. John Meisel	Pathways to Independence
Joanne Lapensee & Christian M. Paupe	Melo Hotel Group	Joan Peacock
Legasys Corp.	Keith & Jean Merritt	Sybil & Lionel Peckover
Portia Leggat	The Message Network	Robert Peters
William & Claire Leggett	Elva Metcalfe	David & Deborah Pichora
Leighton Lands	Henry & Marion Meyer	Pilkington-Henniger Charitable Trust
Jack Leitch	Winston Meyer & Marie-Claude Larose	Ronald & Marjorie Pinkerton
Leon's Furniture Ltd. (McKercher Bros. Ltd.,)	Susan & Bill ■ Miklas	Pita Pit
Janice Ley	Vern & Janet Miles	Pittsburgh Community Benefit Corporation
Lillian & Leroy Page Foundation	Anne Milina ■	Helene Pratt & Andrew Koval
Limestone District School Board	Mill & Ross Architects Inc.	Praxair Canada Inc
Livingston/Davidson Neighbourhood Festival	Joan & Donald Miller	Prince Edward County Community Foundation
Valery Lloyd-Watts	Scott Miller	Bob Pritchard
The Llynlea Corporation	Michael & Joanne Milligan	Probus Club Kingston Frontenac
Frank Lockington	Amanda Milliken	Barbara Pullman
Ann & Tom Lodge	Catherine Milliken	Jocelyn Purdie
Margery & Jim Low	Peter Milliken	Queen's University
Loyalist Township	Juliet Milsome	Queen's University - Commerce Society
Edward Luce	Minos Village Limited	Queen's University - Department of Obstetrics
Maj. J. William K. Lye	Robert G. Mitchell	Queen's University - Faculty of Applied Science
Brg Gen William K. Lye	Ingeborg Mohr	R. Paul Martin Construction Co. Ltd.
Estate of Peter Lyon	Michael E. Moir & Sara J. McMillen	Elinor Ratcliffe
Christopher A. R. & Jane Lythgo	Moist Enterprises Inc.	Raven Realty Ltd.
Jade Macdonald	The Molson Donations Fund	Marc & Marney Raymond
Jan MacDonald	Leslie Monkman	RBC Foundation
Pat Mackay	George Montague	RBC Royal Bank
Mackenzie Financial Corporation	Richard Moorehouse ■	RCHA Brigade Association
Judith & Robert Mackenzie	Ieuan & Alison Morgan	Venicio & Fatima Rebelo
Mackillop Law Office	Michael Morres	Wendy & Robert Reid
William & Carol Mackillop	Mariella Morrin	Estate of Rosalind Richardson
Douglas & Blu MacKintosh	Todd Morris & Gillian Purvis	Dr. Peter Richardson
Macklam Management Inc.	Morven Construction Ltd.	Rideau Waterway Land Trust Foundation Inc.
Janet & Lorne MacLachlan	Matthew D. & Dianne Muisiner	Sandra E. Rider
Doreen & David MacNamara	Goldie Murphy	Doug & Donna D. Ritchie
Christopher Macrae	Elspeth Murray & Peter Richardson	Robert J. Reid & Sons Funeral Home
Arnold ■ & Evelyn Maizen	Mutual Life of Canada	Anne & Barry Robertson
Surendra Mankodi & Marjorie Tracy	Napanee Auto Supply Ltd.	Michael & Penny Robinson
Katherine & Paul Manley	Bob Napier	Rogers & Trainor
Allan Manson	Nancy Nash Foster	Gary Rogers
Maple Leaf Sports & Entertainment	Neil & Mary Neasmith	Romper Holdings Ltd
Marc F. Raymond Opticians Ltd.	Nedco	Michelle Roos & Mike Kramer
Marine Museum of the Great Lakes at Kingston	Neighbourhood Sharing Centre	Rosen Corporation Limited
Joanne Marion	Janet & George ■ Newsome	Rosen Heating & Cooling
Joan D. Marshall ■	Tom ■ & Isabel Newton	Gregg & Marla-Beth Rosen
Sarah & Tomas Martinek	The Eddie Bak Memorial Fund	Harvey & Sharon Rosen
Matthews Machine Products Ontario Ltd.	Dan Norman	Irving & Regina Rosen
Dr. Ray & Melba Matthews	Novelis Inc.	Mrs. Harry Rosen ■

DONOR NAME	DONOR NAME	DONOR NAME
Francois Rouget	Lawrence N. Stevenson	Christopher A. West
Rosalie & Stephen Roughton	Alec and Anne Stewart	Michael L. West
Karen Rudie	Dave & Monica Stewart	Hans & Marion Westenberg
Ken Rush ■	Bruce & Anna Stickle	Lee Wetherall
Edmund & Isabel Ryerse	Harold & Clare ■ Still	Henk Wevers
S&R Department Store	David William Stratas	Cyril E. Wharrie & Evelyn D. Wharrie Fund ■
Stanley & Gillian Sadinsky	Glenn Stresman	Brian & Kathie Wherrett
Geoffrey & Danielle Sandiford	Sun Life Financial	Mel G. Wiebe and Lola Cuddy
Mark Santoni	Sunnyside Children's Foundation	Tom Wightman
The Saunders Family	Jennifer Surridge	Vivian & Lloyd ■ Willows
Scarthingmoor Farms Limited	W. J. & Margaret Sutcliffe	Ian Wilson
Diane Schoemperlen	James S. and Doris M. Sutherland	Jim & Jean Wilson
Scotia McLeod Inc.	Robert Sutton ■	John & Nancy Wilson
Scotia Private Client Group	T.J. & Janet Swaine	Ruth Wilson & Ian Casson
Scotiabank	Canadian Tire Napanee - Rosalind & Tom Zywo	Windmills Cafe Ltd.
Scotiabank - Princess & Bagot	Mac Tackaberry	Withey Addison LLP
Duncan & Arden Scott	TD Bank Financial Group	Wendy Wobeser
Glenda Scott	TD Canada Trust - Princess & Wellington	Walter & Margaret Wojtkowiak
Michael Scrannage & Karen Charlton	Telus	Kenneth D. Wollin
William Seath	Victor Teves	Women's Health Forum
Secker, Ross & Perry	Tom Thayer	Robert A. Wood & Janet S. Lee
Hugh & Donna Segal	Chris Theal	W. Donald & Constance Wood
Stephen & Laura Seiffert	Martin & Kathy Thomas	Flora Woodcock
Alexander "Sandy" Sellers	The Cameron & Laurie Thompson Fund	Crissa M. Wowk
Seniors Association Kingston Region	Doug & Marianne Thompson	Marg & Roger Wright
Christa Seul	Mary-Alice & Paul Thompson	Mr. & Mrs. G.R. Wyatt
Keith & Marie Shales	Thomson Jemmett Vogelzang	Kaethe Yanovsky
Gavin and Gloria Shanks	David J. and Maja-Lisa Thomson	Estate of Nan Yeomans
Graham Shannon	G. Graham Thomson ■	Youth Diversion Program
Ed Shaw	Jack & Diana Thomson	Margaret Zakos
Terry Sheard	Hugh & Wendy Thorburn	Mark & Sue Zavitz
Estate of Elsie Sheats	Thousand Islands Health Support	57 Anonymous Donors
Estate of Ellen Shepherd	Tir Nan Og Irish Pub	John & Hazel Fotheringham
John Zomer	Peter & Heather Tobias	Wilma Francis
Shire Canada Inc.	Eric Geoffrey & Elizabeth Torrible	Hirst Office Products
Shoppers Drug Mart - Bayridge	TransCanada PipeLines Ltd	Home Cardiographics Inc.
Pat & Cris Simmons	Trent Drugs (Wholesale) Ltd.	Kingston Lift Truck Service
Robert J & Margorie Simpson	Bernard & Jean Trotter	Kingston Nissan
Sisters of Providence of St. Vincent de Paul	Trousdale & Trousdale, Barristers & Solicitor	Carole R. Matusiak & Janet Bodendistel
Marco L. Sivilotti	Isabel Turner	Donna & Mike O'Connor
SLH Transport Inc.	Union Gas	Winifred M. Ross
Kenneth A. & Wilhelmina R. S. Smee	United Way Serving Kingston, Frontenac, Lennox & Addington	Michael W. McCallion
A.B. & Edith B. Smith	Universal Supply Group	Dr. & Mrs. S.L. Fransman
Beryl & Bob Smith	The University Club at Queen's, Incorporated	Rotary Club of Kingston
Edith B. Smith	Rena B. Uptis	Kingston Nissan
Frances K. Smith	Upper Lakes Group Inc.	Weed Man
John Smythe	Stuart Vandewater	Nancy Stevens
Doug Snyder & Carolyn Hetherington	Viner, Kennedy, Frederick, Allan & Tobias	Wilma Francis
Social Planning Council of Kingston and Area	VOCEC Education Award Fund	Paul Webber
Janet Sorbie	Michael Voisin	
South Frontenac County Community Stewardship	W.P. Fielding Holding Limited	
Tim A. H. & M. Christine Sparling	Jason Wagar	
Special Events - A Joe Show	Douglas & Catherine Walker	
Special Events - Jayna Hefford Trust Fund	Elizabeth M. T. Walker	
Special Events - Tower of Hope	James & Jeanette Walmsley	
Peter & Frances Splinter Fund	Waste Management	
St. Lawrence College	Nick Waterfield & Liz Savill	
St. Lawrence College - Brockville Campus	Lila Watson	
The Stark Family Fund ■	Ron & Donna Watts	
Kim & Bill Steacy	Sue Waywell	
Steamatic Of Kingston Limited	Diana & John Weatherall	
Howard Steele	Sandy & Les Weatherby	
Ernest & Margaret Sterns	Marjorie & Keith Webber	

FINANCIALS

Investments

The financial markets continued their upward trend, allowing the foundation to add to the gains that we achieved in 2009. Once again, thanks to our Investment Committee, led by Board member Scott Miller and our investment manager, Marc LeBlanc, our funds returned 9.30% in 2010. Our annualized three and five year rates of return are 3.1% and 4.2% respectively.



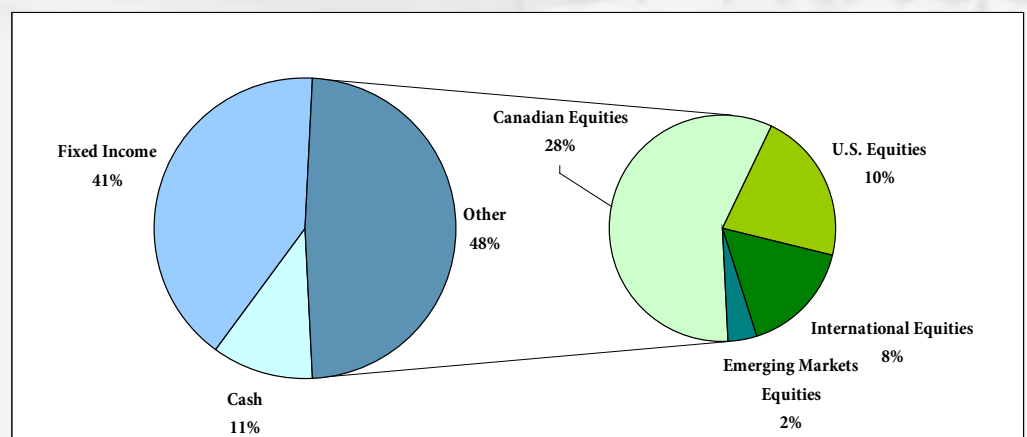
The comparable benchmark indices performed as follows:
 S&P/TSX Composite Index 14.4%
 S&P 500 Index (CDN \$) 6.9%

Our Investment committee follows the guidelines laid out in our Investment Policy, which is crafted to maximize returns with minimal risk to ensure that we meet our donor's wishes to protect the capital of their donations while providing maximum and long-lasting benefit to the organizations in our community.

Assets

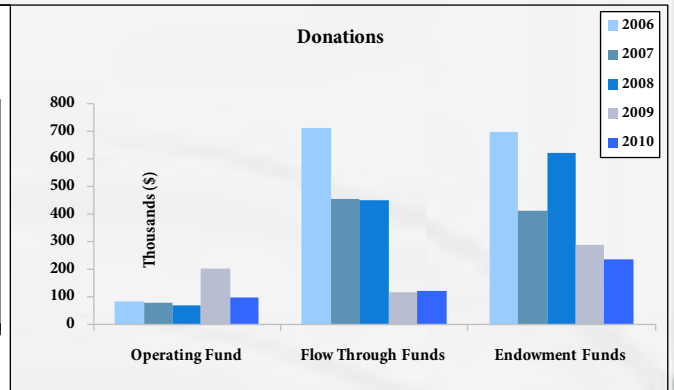
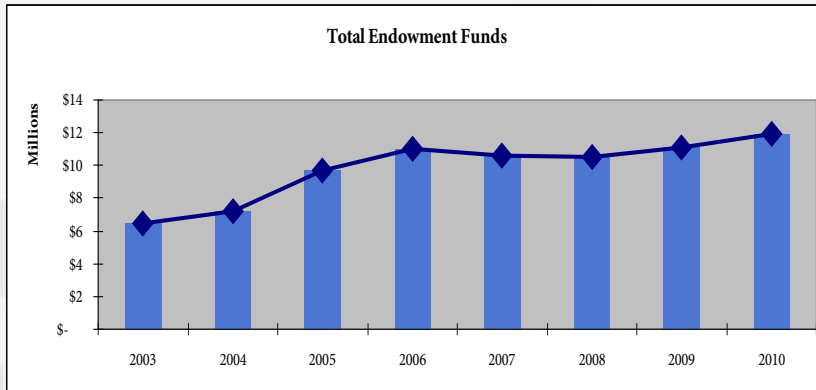
As of December 31, 2010, the Foundation's investments totaled \$11,950,973. The asset mix was as follows,

Asset Allocation	
Cash	10.7
Fixed Income	41
Equities	48.3
Canadian Equities	28
U.S. Equities	10.4
International Equities	7.8
Emerging markets Equities	2.1
Total Allocation	100%



Funds

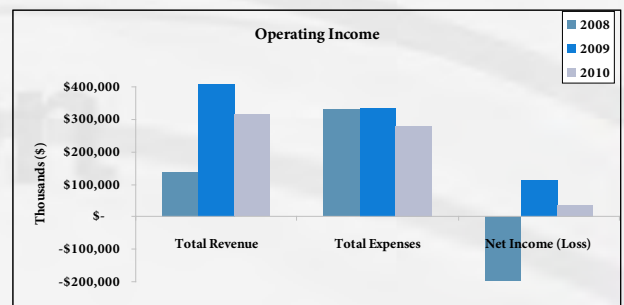
Donations to the endowment funds in 2010 were \$235,831, down from \$287,896 in 2009. Unrestricted donations were \$98,603, and there were also \$120,367 in flow-through donations. The total contributions to the endowment funds now total \$9,501,636.



Operations

Revenue to the operating fund was \$304,698 in 2010, compared to \$446,830 in 2009. The difference is due to a bequest of \$100,000 received in 2009. Expenses dropped to \$269,203 compared to the previous year's expenditures of \$332,687. Overall, there was an excess of \$35,495 of revenue over expense for 2010. The operating fund balance stood at \$58,454 at the end of 2010.

	2008	2009	2010
Donations	68,336	202,619	98,603
Investment Income OEF	(78,516)	74,359	52,753
Administration Fees	137,930	138,557	143,849
Grants to CFKA	0	3,033	0
Miscellaneous	4,412	6,877	1,225
Fund Raising Events	2,989	21,385	7,630
Gross Income	135,151	446,830	304,698
Grant project expenses	0	490	0
Office insurance	4,065	4,065	4,148
Office general expenses	29,653	33,584	27,359
Office rent	28,131	31,066	26,066
Meetings and promotions	29,910	27,123	10,642
Professional fees	12,095	18,875	9,225
Publications and printing	8,330	27,869	10,122
Wages, benefits, consulting fees	188,628	155,553	162,965
Fundraising events	3,682	11,732	7,944
Miscellaneous	25,381	22,330	10,732
Total expenses	329,875	332,687	269,203
Net income	(\$194,724)	\$114,143	\$35,495





HOW TO GIVE

GIFTS OF CASH

Many people give gifts of cash. For many, it is as easy as writing a cheque or using a credit card. Your charitable tax receipt will be issued promptly.

GIFTS MADE THROUGH TRUST

A planned gift allows you to take care of your family while ensuring a gift to the community. Make the decision today about your gift. The transfer can happen in the future using a charitable remainder trust or life insurance. The Community Foundation for Kingston & Area is committed to making it as easy as possible to turn your charitable dreams into reality interests of the community at large.

GIFT OF PERSONAL PROPERTY

A gift of personal property, like jewelry, artwork or antiques must be accompanied by a third-party appraisal stating current market value. Typically, your gift would be sold and the proceeds invested by the Foundation.

APPRECIATED SECURITIES AND REAL ESTATE

There are significant tax savings for taxpayers who donate publicly traded securities. Giving real estate can also provide significant tax and income advantages, allowing some donors the chance to make substantial charitable gifts that are not possible otherwise.

MONTHLY CONTRIBUTIONS

It is becoming increasingly popular to give via credit card and, even beyond that, to set up donations to occur on a regular, monthly basis. Signing up for monthly contributions from your credit card is a convenient and hassle-free way to donate to the CFKA. If you are interested in becoming a monthly partner please contact us.

CONTACT

Community Foundation for Kingston & Area
165 Ontario Street
Kingston, Ontario
K7L 2Y6
Phone: 613-546-9696
Fax: 613-531-9238
foundation@cfka.org
www.cfka.org